

# Armchair template for 1:6 scale dolls

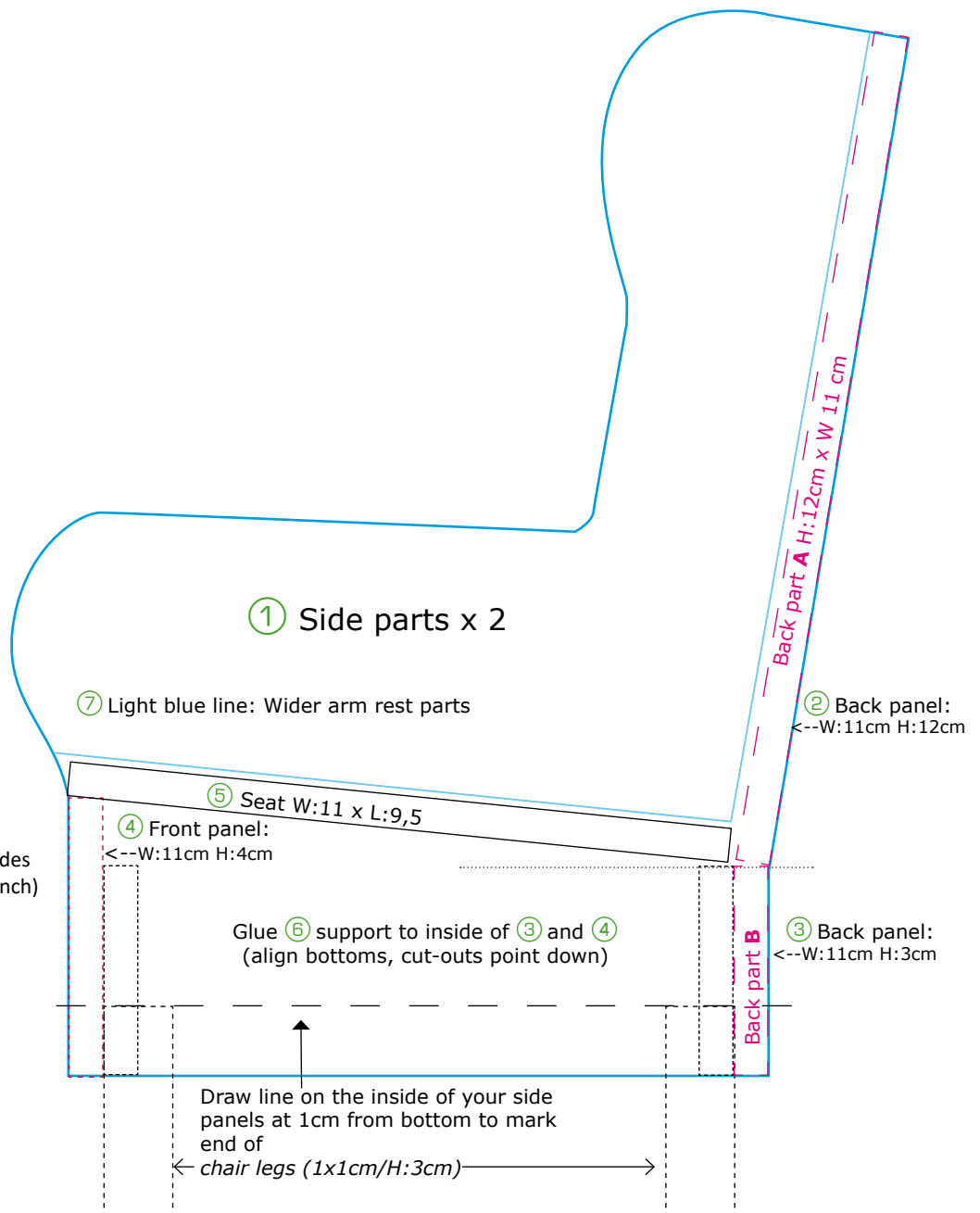
(With cover pattern)

This template is free for personal use.

You are welcome to share the link to the tutorial blog post, but please **do not** share this PDF separately away from the blog.

Your subscription to my blog is very much appreciated. That is the one thing you can give back. Thank you.

And now: Have fun making your own armchair!



## Material:

Cutter, glue, ruler, pencil, tape

Foam board, paper laminated on both sides  
DIN A4/ 5mm ( 8,5 x 11, thickness 3/16 inch)

For legs:

4 square wooden dowel pieces

1 x 1 cm wide, 3 cm long

(1/25 inch wide, 3/32 inch long)

cut along line to align with board edge



*Books*

①

*Side parts*

①

*Side parts*

⑦

*Side part +  
cut 2x*

For wider arm rest cut 7  
and glue to sides last.

cut along line to align with board edge



②

*Back panel*

Back part **A** H:12cm x W:11 cm

③

*Back panel*

Back part  
**B** H:3cm x  
W:11 cm

④

*Front panel*

Front Panel H:4 cm x W:11 cm

⑥

*Seat support  
and leg  
stabilizer*

Glue to inside of  
front and back  
panel (3 & 4)  
cut-outs for legs  
at bottom, align  
bottoms

Cut outs are  
for 1 x 1 cm  
square dowels,  
adjust to dowel  
if needed.

⑤

*Seat*

Seat W:11 cm x L:9,5 cm

# Armchair cover pattern

Inner side covers  
Cut 2x (one turned) & add sewing allowance!

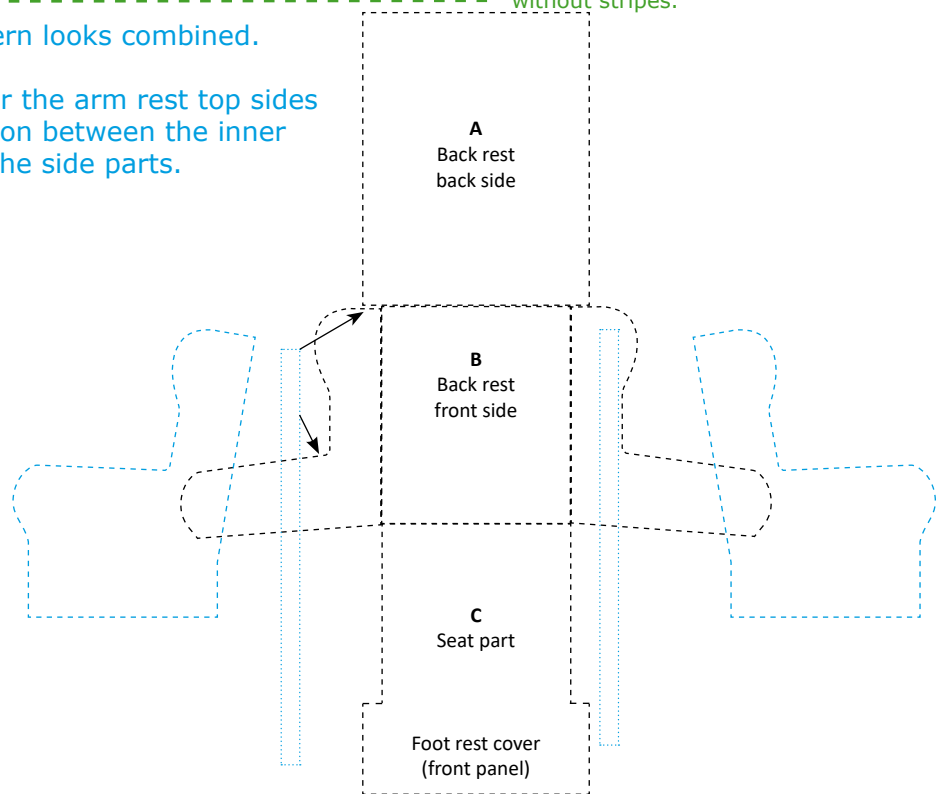
Outer side covers  
Cut 2x (one turned) & add sewing allowance!

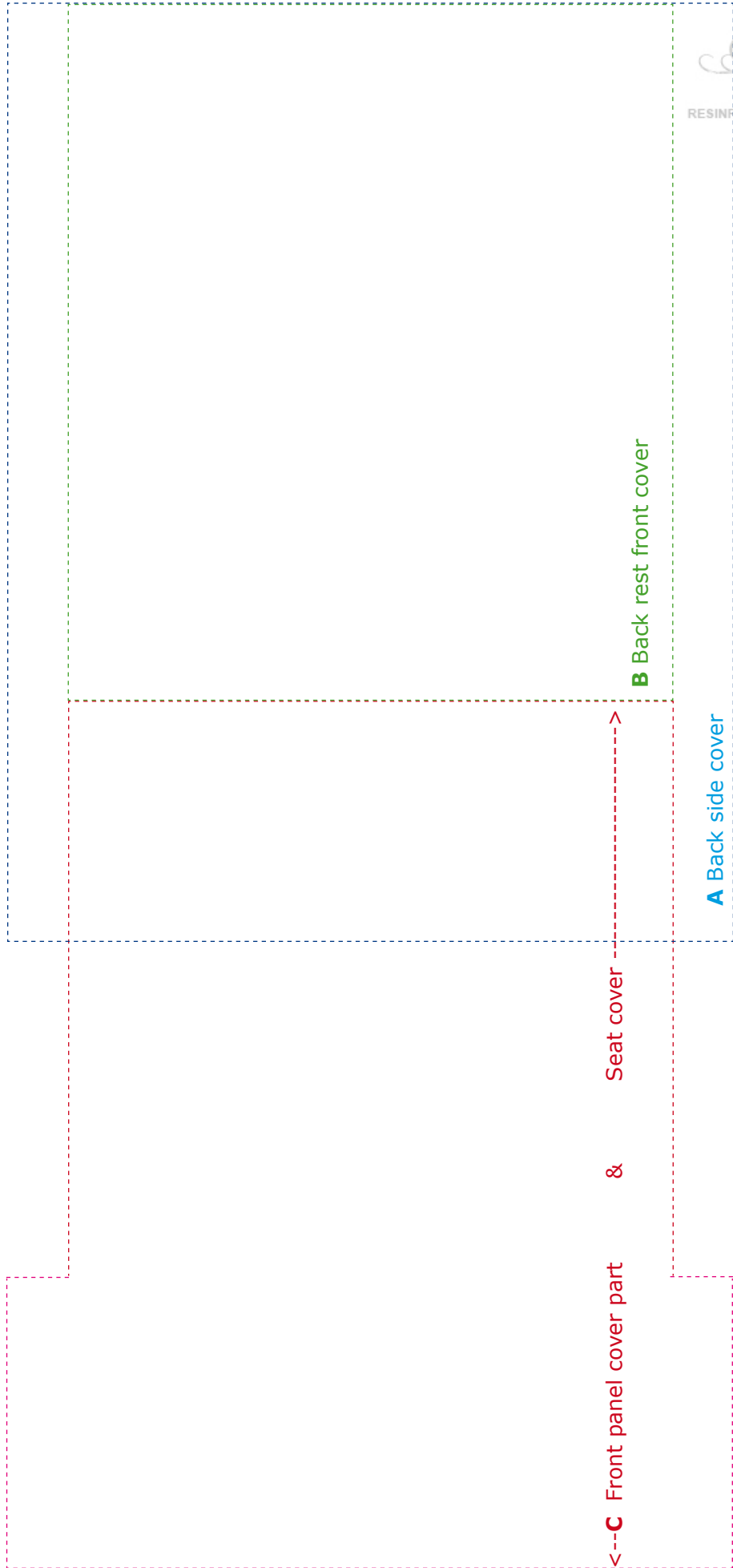
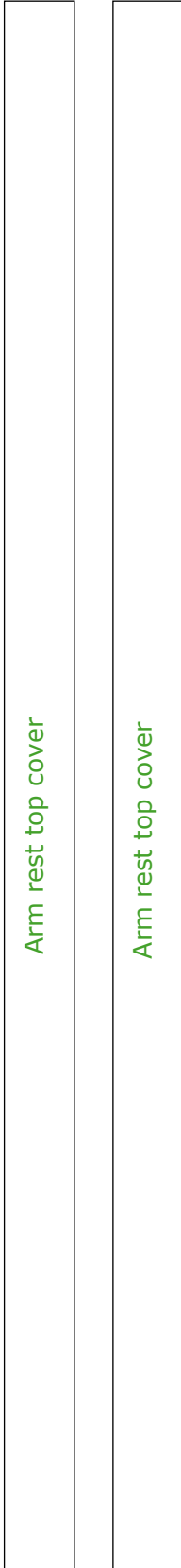
*If you want to add additional padding for your seat and back rest, you need to make the pattern for your covers yourself. But since you basically have all measurements, it shouldn't be that difficult.*

Cut at green lines for stretchy fabric/without stripes.

This is how the pattern looks combined.

The two stripes cover the arm rest top sides and are the connection between the inner arm rest cover and the side parts.

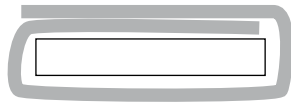




# Armchair separate padding

Back rest padding  
110 mm h x 90 mm w

For additional padding  
made of foam board +  
a wrap of felt/fleece etc:  
2 layers on top, 1 below



Seat padding  
93mm h x 90 mm w

Blue dotted line = Covers  
Place on fold for double length  
Add seam allowance!

## Book covers for foam board left overs

