

Armchair template for 1:6 scale dolls (With cover pattern)

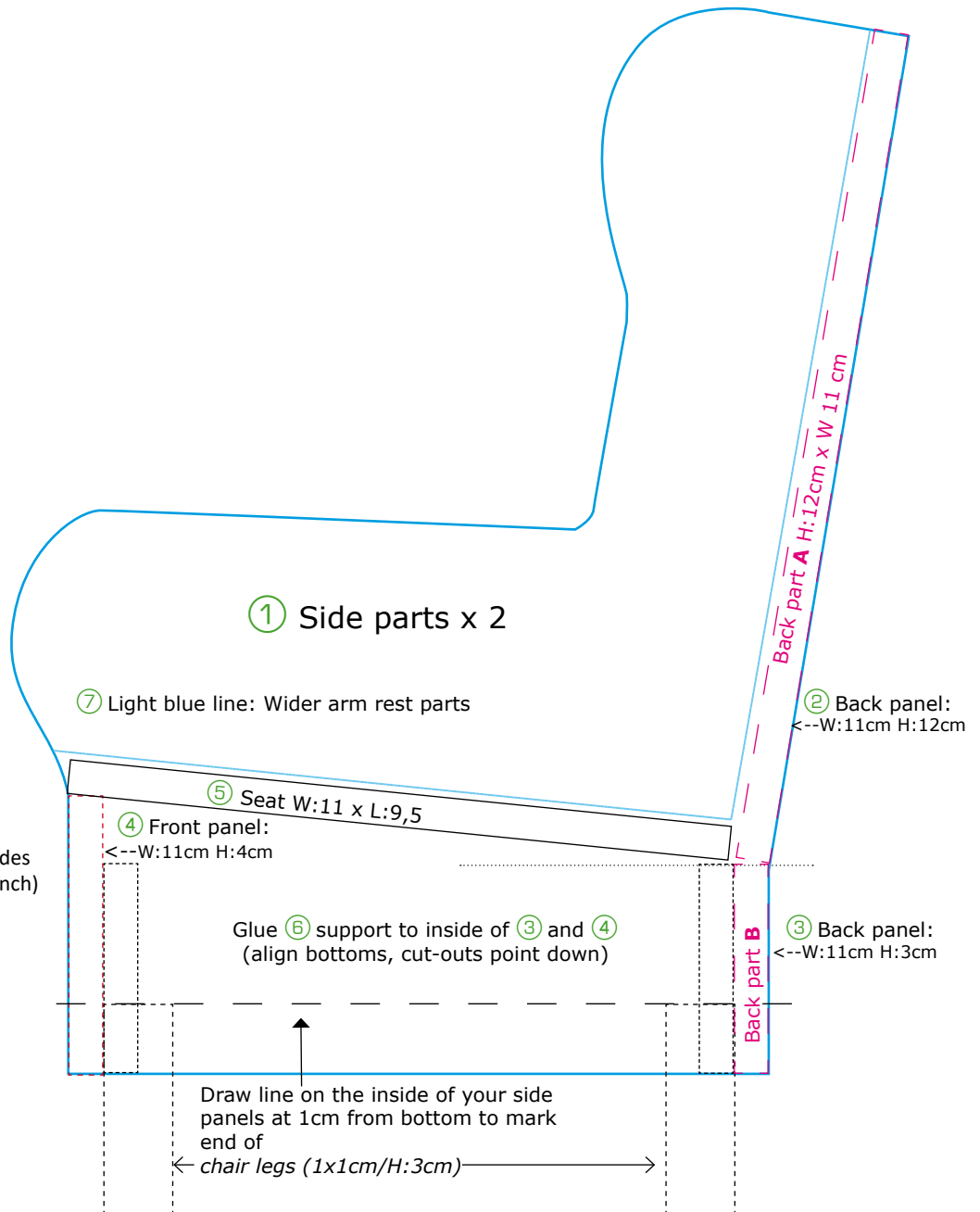


This template is free for personal use.
You are welcome to share the link to the tutorial blog post, but please **do not** share this PDF separately away from the blog.

Your subscription to my blog is very much appreciated.
That is the one thing you can give back. Thank you.

And now: Have fun making your own armchair!

Crafting for dolls ~ patterns & tutorials ©ResinRapture ResinRapture.com



Material:

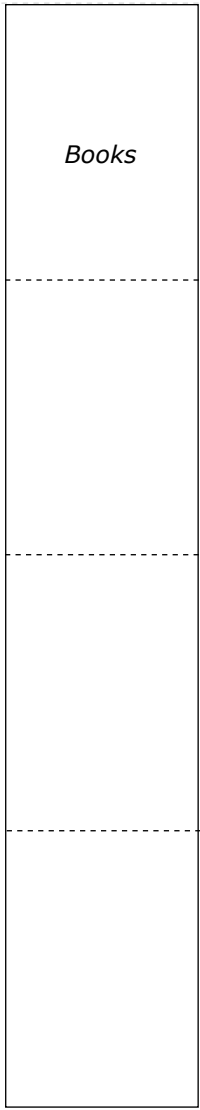
- Cutter, glue, ruler, pencil, tape
- Foam board, paper laminated on both sides
- DIN A4/ 5mm (8,5 x 11, thickness 3/16 inch)
- For legs:
- 4 square wooden dowel pieces
- 1 x 1 cm wide, 3 cm long
- (1/25 inch wide, 3/32 inch long)

Make sure to print at **100%**
 ResinRapture patterns are free & for personal use only.
Don't forget to subscribe. <https://resinrapture.com/>
 Show what you have created with it: Tag @resinrapture on your Instagram

cut along line to align with board edge



Books



①

Side parts

①

Side parts

⑦

Side part +

For wider arm rest cut 7 and glue to sides last.

cut along line to align with board edge



②

Back panel

Back part **A** H:12cm x W:11 cm

③

Back panel

Back part
B H:3cm x
W:11 cm

④

Front panel

Front Panel H:4 cm x W:11 cm

⑥

*Seat support
and leg
stabilizer*

Glue to inside of
front and back
panel (3 & 4)
cut-outs for legs
at bottom, align
bottoms

Cut outs are
for 1 x 1 cm
square dowels,
adjust to dowel
if needed.

⑤

Seat

Seat W:11 cm x L:9,5 cm

Make sure to print at 100%

ResinRapture patterns are free & for personal use only.

Don't forget to subscribe. <https://resinrapture.com/>

Show what you have created with it: Tag @resinrapture on your Instagram

Armchair cover pattern

Inner side covers
Cut 2x (one turned) & add sewing allowance!

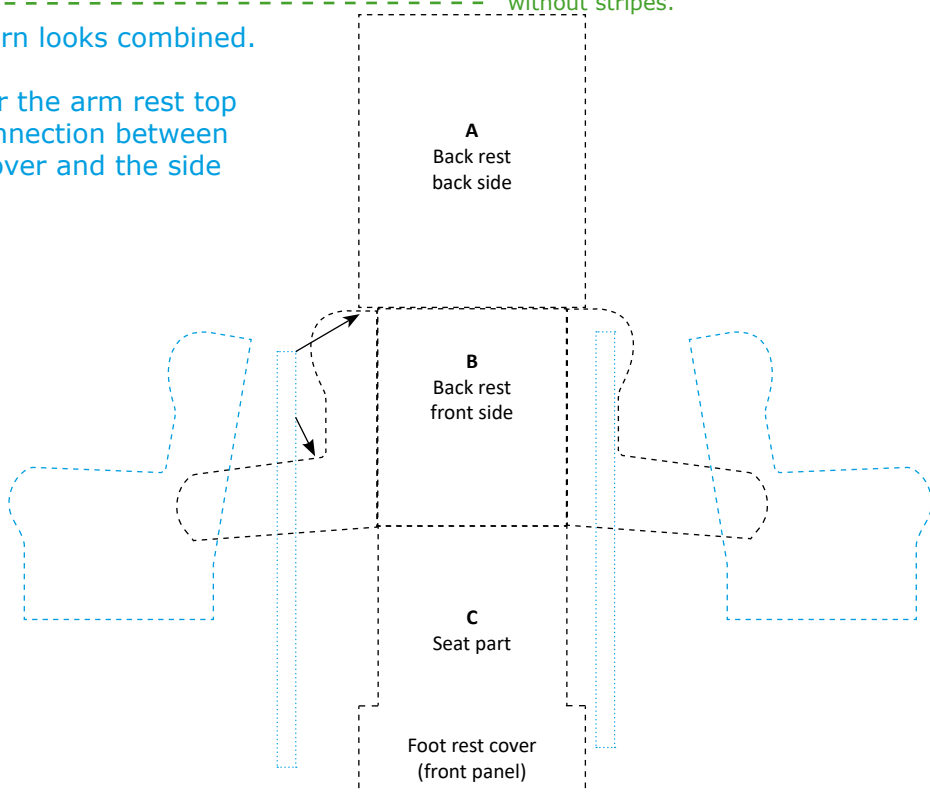
Outer side covers
Cut 2x (one turned) & add sewing allowance!

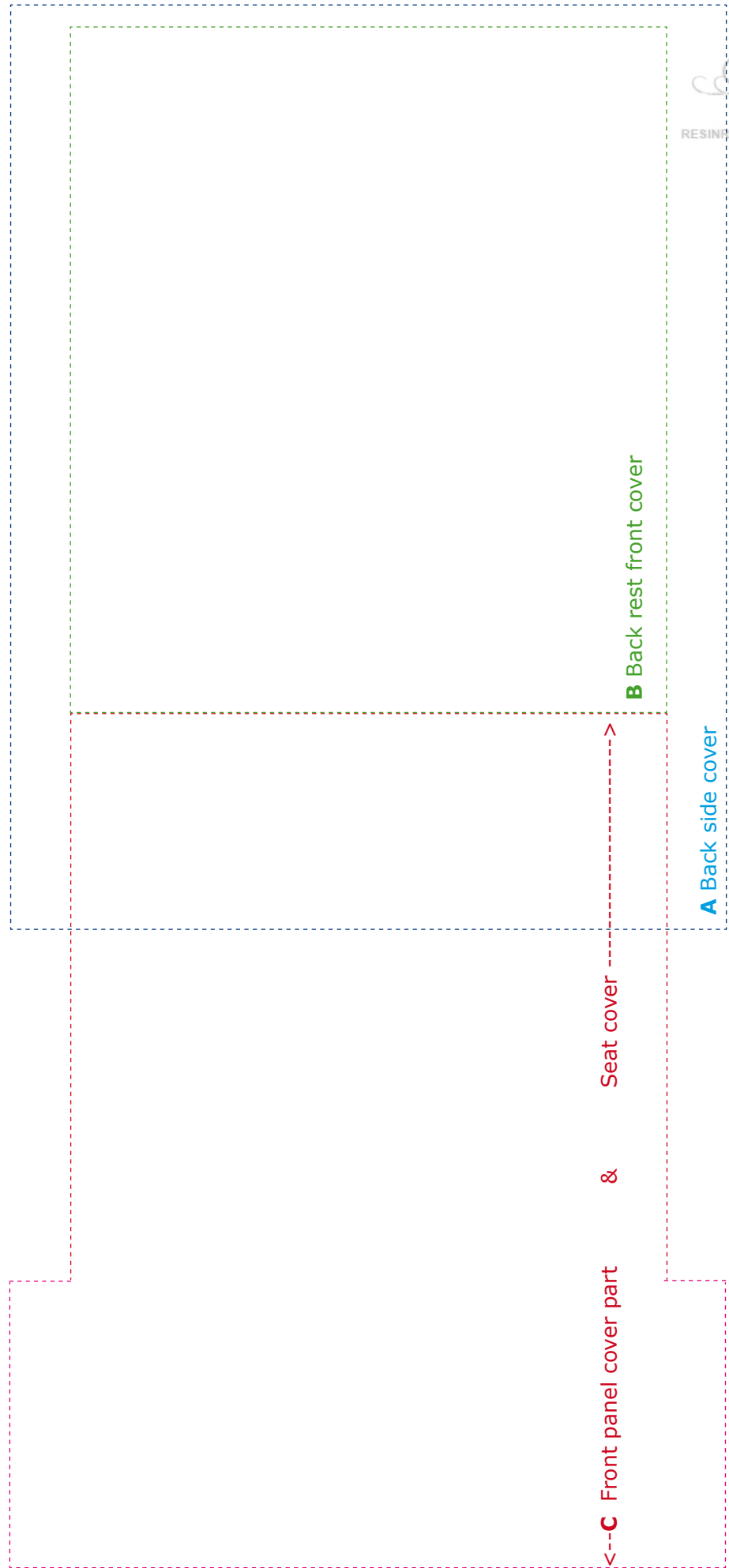
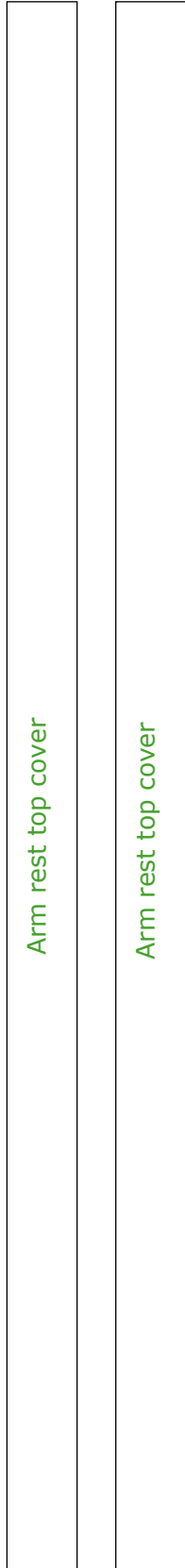
If you want to add additional padding for your seat and back rest, you need to make the pattern for your covers yourself. But since you basically have all measurements, it shouldn't be that difficult.

Cut at green lines for stretchy fabric/without stripes.

This is how the pattern looks combined.

The two stripes cover the arm rest top sides and are the connection between the inner arm rest cover and the side parts.





Make sure to print at [100%](#)

ResinRapture patterns are free & for personal use only.

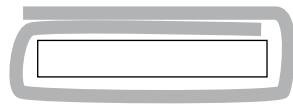
Don't forget to subscribe. <https://resinrapture.com/>

Show what you have created with it: Tag @resinrapture on your Instagram

Armchair separate padding

Back rest padding
110 mm h x 90 mm w

For additional padding
made of foam board +
a wrap of felt/fleece etc:
2 layers on top, 1 below



Seat padding
93mm h x 90 mm w

Blue dotted line = Covers
Place on fold for double length
Add seam allowance!



Book covers for
25mm wide left overs

