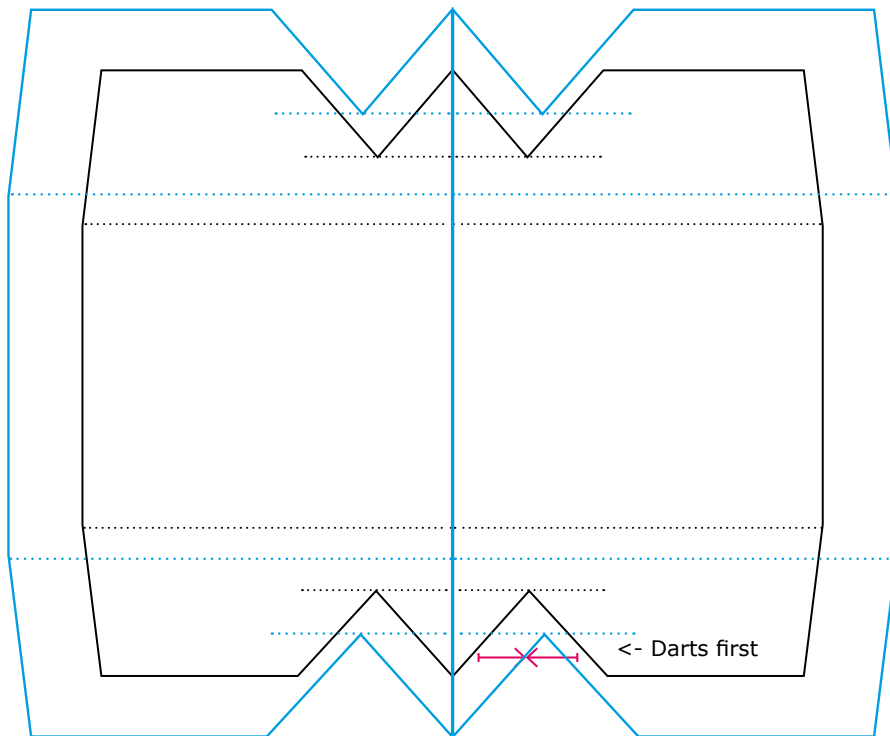


# Tote bag for dolls

Size for 1/4 & 1/6



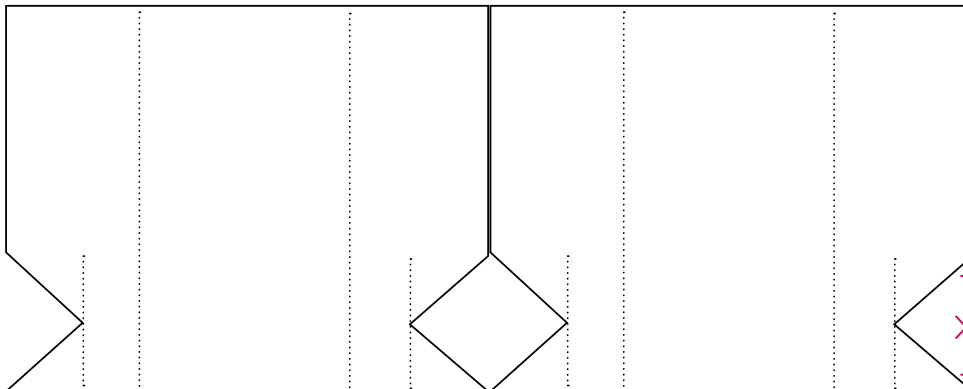
Straps around bag for 1/6 approx. 2x24 or 48cm

Add allowance, sew darts first

<- Handle position

<- Darts first

For use on a ribbon or braid place pieces like this



Blue pattern for 1/4 dolls [120%](#)

ResinRapture patterns are free & for personal use only.  
Don't forget to subscribe. <https://resinrapture.com/>

**Show what you have created with it:**

Tag @resinrapture on your Instagram or join the Blythe and 1/6 doll sewing group:  
<https://www.facebook.com/groups/onesixbackstage/>