

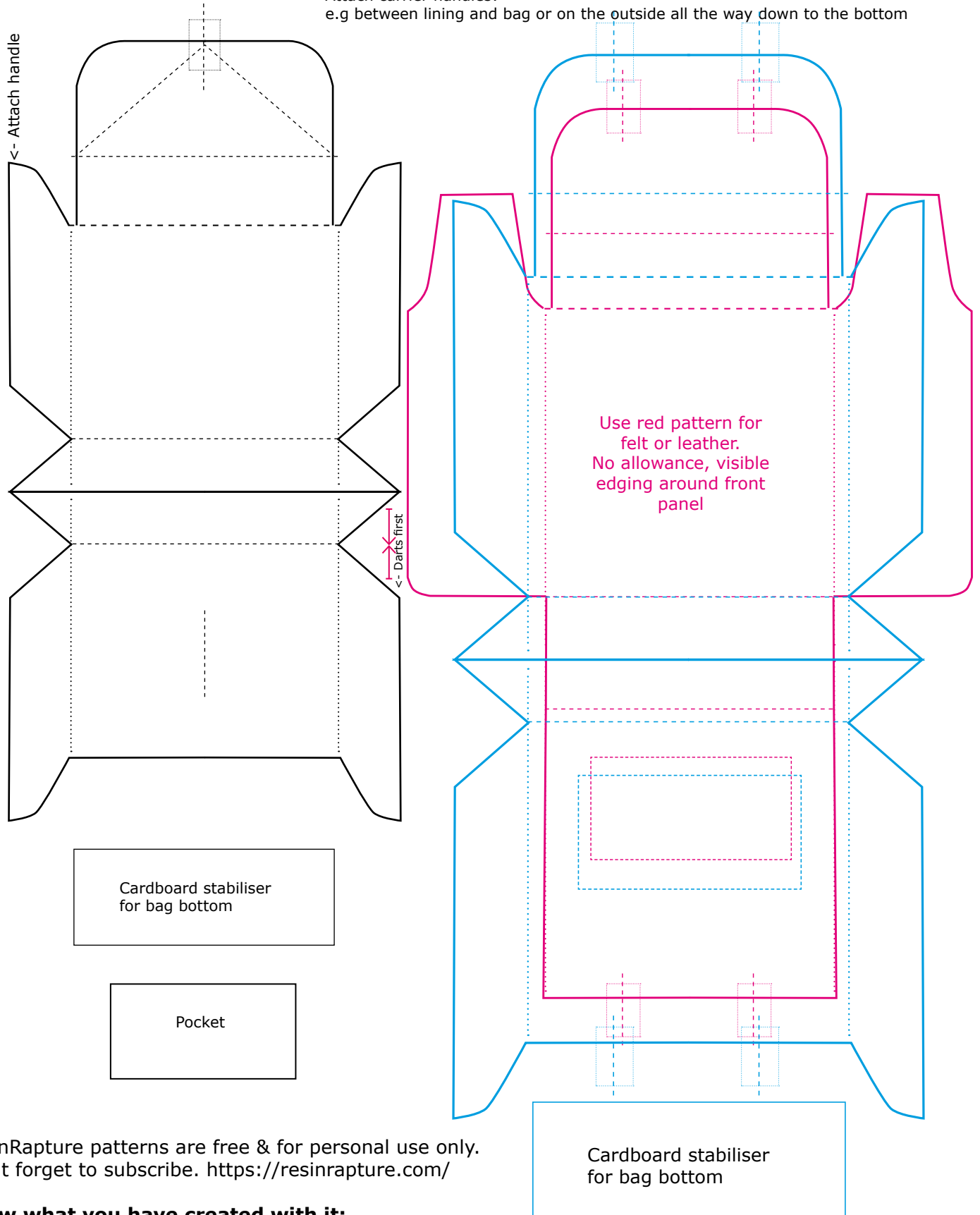
Messenger bag for dolls

Size for 1/4 & 1/6

Add allowance

Attach carrier handles:

e.g between lining and bag or on the outside all the way down to the bottom



ResinRapture patterns are free & for personal use only. Don't forget to subscribe. <https://resinrapture.com/>

Show what you have created with it:

Tag @resinrapture on your Instagram or join the 1/6 doll sewing group: <https://www.facebook.com/groups/onesixbackstage/>

Blue pattern for 1/4 dolls 120%