

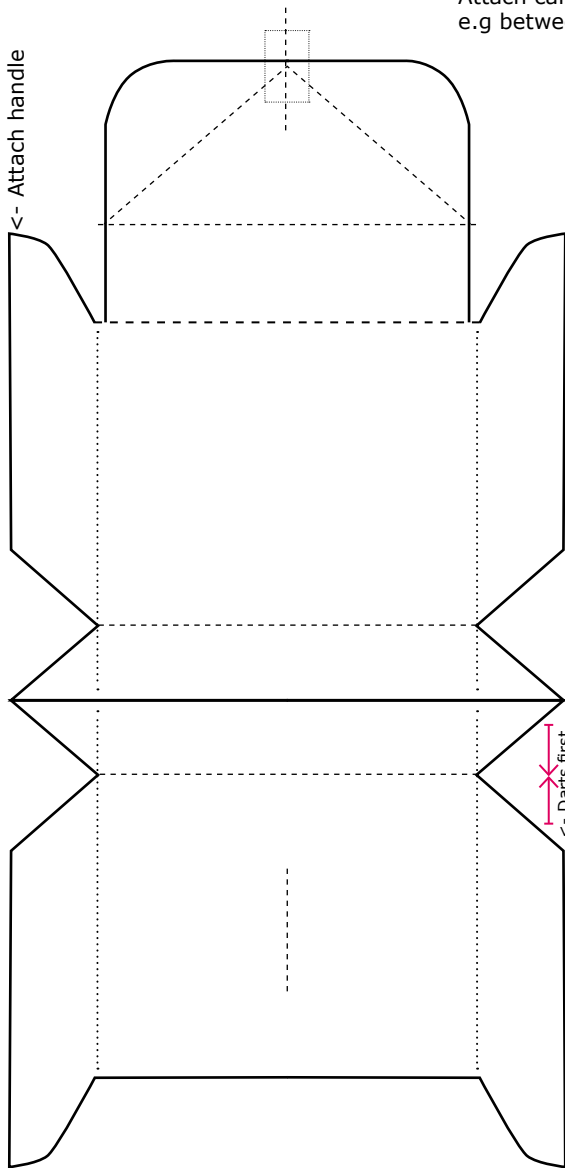
Messenger bag for dolls

Size for 1/4 & 1/6

Add allowance

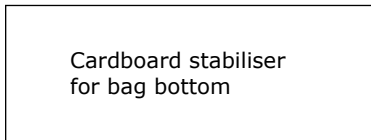
Attach carrier handles:

e.g between lining and bag or on the outside all the way down to the bottom

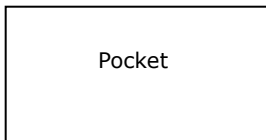


<- Attach handle

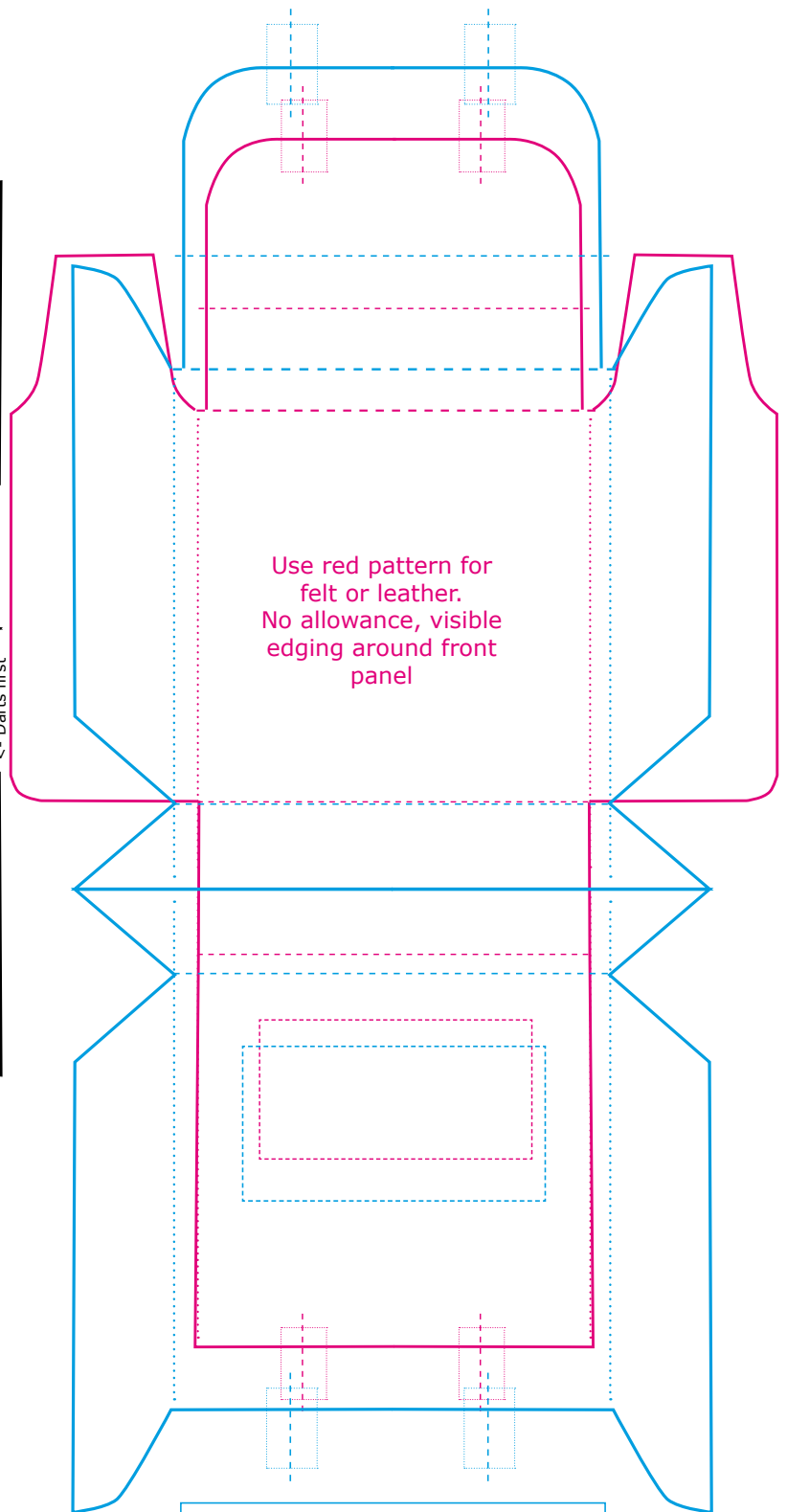
<- Darts first



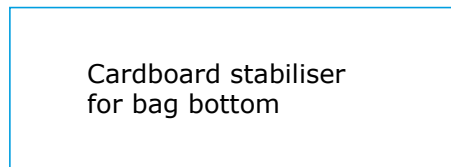
Cardboard stabiliser for bag bottom



Pocket



Use red pattern for felt or leather.
No allowance, visible edging around front panel



Cardboard stabiliser for bag bottom

Blue pattern for 1/4 dolls 120%

ResinRapture patterns are free & for personal use only. Don't forget to subscribe. <https://resinrapture.com/>

Show what you have created with it:

Tag @resinrapture on your Instagram or join the Blythe and 1/6 doll sewing group: <https://www.facebook.com/groups/onesixbackstage/>